



**ACCÉLÉRATEUR  
DE PROGRÈS**

# MEDZ

**A LEADER  
COMMITTED  
TO SUSTAINABLE  
DEVELOPMENT**

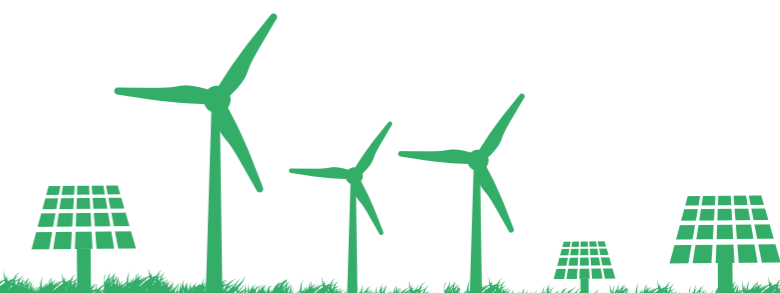


-  /COMPANY/MEDZ
-  /MEDZMOROCCO
-  /MEDZMOROCCO
-  SHOWROOM@MEDZ.MA

WWW.MEDZ.MA



# ABOUT MEDZ



## Facts and figures



FOUNDED IN  
**2002**

MORE THAN  
**2 600**  
HECTARES DEVELOPED

**400 000**  
SQUARE METERS OF OFFICE  
SPACE DEVELOPED

**16**  
INDUSTRIAL ZONES

**4**  
BUSINESS PARKS

**5**  
TOURIST ZONES

OVER  
**110 000**  
JOBS CREATED IN ITS  
BUSINESS PARKS

MORE THAN  
**1 500**  
NATIONAL AND INTERNATIONAL  
CUSTOMERS



## Mission

Since its establishment in 2002, MEDZ has been leveraging its expertise and know-how to contribute to territorial development in Morocco. MEDZ's mission is to design, develop, market, and manage a new generation of business zones with strong investment potential, capable of generating wealth and employment opportunities.

In this context, MEDZ supports the growth of key sectors such as automotive, aerospace, agro-industry, offshoring, and more, thereby contributing to the revitalization and expansion of the national economy, with the ambition of making sustainable development a genuine driver of value creation



**Contact :**  
Showroom commercial MEDZ - Rabat  
Phone: +212 537 57 66 78 - Fax: +212 537 71 64 17  
E-mail : showroom@medz.ma  
www.medz.ma



# SUSTAINABLE DEVELOPMENT, AN ABSOLUTE PRIORITY IN EVERYTHING WE DO

As a key player in the Industrial Acceleration Plan, we are writing the history of the regions and creating, developing and preserving a high-performance, sustainable socio-economic environment. Today in Morocco, and tomorrow beyond.

For each of our projects, we have developed expertise and an approach whose ultimate aim is to contribute to local sustainable development by meeting the needs of communities.

We are a credible, reliable partner who listens and shares its know-how. We are an ally that every region can count on to develop its infrastructure and territory.

## OUR CHALLENGES

- Comply with legal and regulatory environmental requirements.
- Adopt the principle of environmental protection right from the park design phase (eco-design).
- Carry out construction work with minimal impact on the environment (low-nuisance worksites).
- Ensure sustainable management of the parks to enhance their attractiveness.
- Strengthen collaboration with stakeholders on environmental issues.
- Develop environmental management skills and promote eco-responsible behavior among employees.
- Optimize consumption of natural resources and reduce pollution from solid and liquid waste.
- Highlight MEDZ's environmental initiatives.
- Act as a responsible economic operator.

## OUR COMMITMENTS

- **Promoting sustainable development:**
- Work to preserve the environment and reduce the significant impact of our activities.
- Pursue energy efficiency and reduce our carbon footprint.
- Encourage stakeholders to adhere to environmental commitments.
- Pursue progress by integrating sustainable development issues.

# A SUSTAINABLE DEVELOPMENT APPROACH INTEGRATED THROUGHOUT THE VALUE CHAIN OF AN INDUSTRIAL ZONE

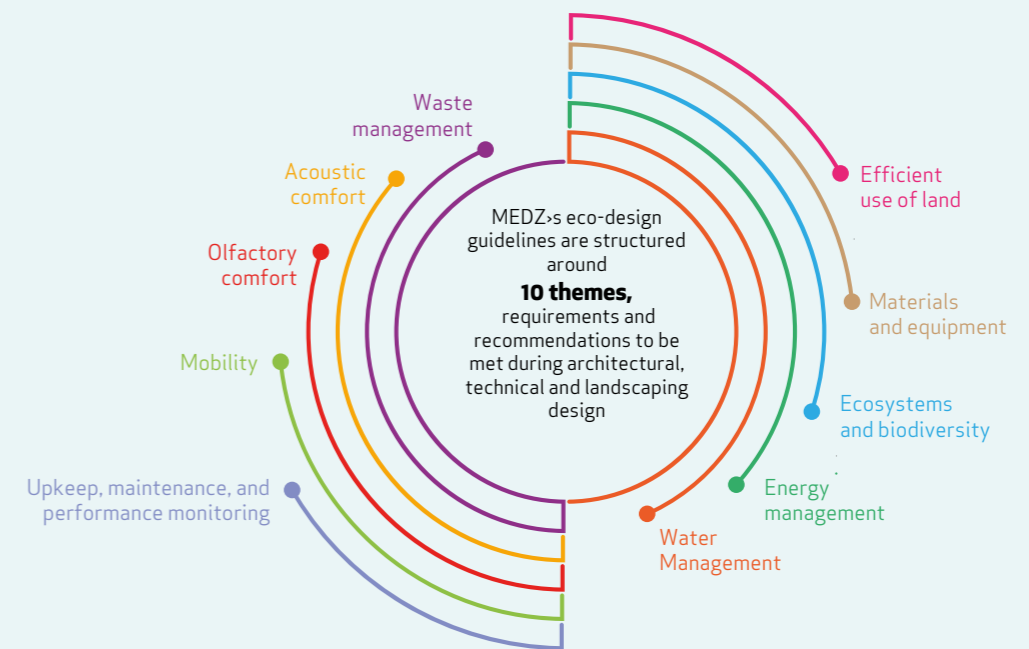


## LOW ENVIRONMENTAL IMPACT PROJECTS

- Inclusion of **environmental specifications in the tender documents for contractors (DCE)**, by means of a Special Environmental Specification Booklet.
- Establishment of a **«low environmental impact worksite»** charter, describing the measures to be taken to control the environmental impact of a worksite, and introduction of an environmental worksite management system to monitor the environmental requirements imposed on construction companies.
- Introduction of an **environmental program for development and construction sites**, through the implementation of an environmental monitoring plan to reinforce the sustainable management of its industrial zones, and regular monitoring of the environmental requirements imposed on construction companies.
- **Monitoring compliance with the environmental monitoring and surveillance program (PSSE)** resulting from environmental impact studies during the operational phase of MEDZ's industrial acceleration zones, to ensure implementation of recommended mitigation measures.

## DEVELOPMENT OF AN ARCHITECTURAL, TECHNICAL AND LANDSCAPING ECO-DESIGN FRAMEWORK FOR A SUSTAINABLE INDUSTRIAL ZONE

MEDZ has chosen to place sustainability at the heart of its priorities. This choice is illustrated by the development of an **eco-design reference** framework to reinforce its sustainable industrial zone design process.



# OUR CERTIFICATIONS & LABELS

## ISO 14001 ENVIRONMENTAL CERTIFICATION



MEDZ's environmental approach was crowned in October 2016 with the award of **ISO 14001 certification**. It brings recognition of its commitment and efforts to eco-design, development, construction and marketing of environmentally-friendly industrial estates.

Among the strengths of this approach:

- The integration of a sustainable development approach into the construction of business parks.
- The implementation of environmental performance monitoring systems throughout the value chain.

## TRIPLE CERTIFICATION AND LABELING (HQE, BBCA, OSMOZ)

Ewane Assets, a subsidiary of MEDZ and a pioneer in the development of professional real estate and the improvement of quality of life at work in Morocco, has been awarded three certifications/labels by Certivéa for the construction of a high environmental performance, low carbon and energy efficient office complex at Casanearshore Parc:

- 1. Exceptional-level HQE (Haute Qualité Environnementale) certification:** this multi-thematic certification, which has become a standard in Morocco, forms the basis for sustainable construction, assessed according to 4 themes (energy, environment, health and comfort).
- 2. Label BBCA (Bâtiments Bas Carbone) mono-thématique,** ce label valorise les démarches bas-carbone du bâtiment, de la construction (mixité intelligente des matériaux, sobriété de la conception, etc.), l'exploitation (énergie faiblement carbonée, énergie renouvelable, etc.), le stockage carbone (présence de matériaux biosourcés) et l'économie circulaire (déconstruction sélective, réemploi de produits, mutualisation des espaces, potentiel de changement d'usage et d'extension).
- 3. Ready to OsmoZ pre-certification:** a gateway to the OsmoZ label, Ready to OsmoZ validates performance in terms of occupant health and well-being, as part of the HQE certification process. The OsmoZ label aims to improve performance and support organizational change, by structuring initiatives to improve the living environment for users.

Through the construction of this new real estate complex at Casanearshore Parc, the ambition is to develop construction methods in favor of the energy transition, in order to combat global warming, while creating healthy and comfortable workspaces for occupants.

## HQE DEVELOPMENT CERTIFICATION

HQE development is a structured approach aimed at designing and implementing a sustainable development project that takes real account of the challenges of sustainable development. The aim is to promote economic and social development and the attractiveness of the development project, while preserving the environment and ensuring a high-quality living environment.

MEDZ's ambition in terms of sustainable development has been rewarded once again with the first HQE certification for its «MIDPARC Tranche IV» project.

This distinction attests to the fact that the new MIDPARC tranche, which is a continuation and improvement of existing practices, contributes to the 6 internationally-recognized aims of sustainable development:



ATTRACTIVENESS



WELL-BEING



SOCIAL COHESION



PRESERVATION AND IMPROVEMENT OF THE ENVIRONMENT



RESPONSIBLE USE OF RESOURCES



RESILIENCE



# OUR ACHIEVEMENTS IN FAVOR OF THE CLIMATE



## CARBON FOOTPRINT OF MEDZ'S ACTIVITIES: CARRYING OUT A CARBON ASSESSMENT

This eco-responsible approach, carried out in the context of the fight against climate change, has enabled MEDZ to **quantify its carbon footprint, become aware of its main emitting items, and set up a mitigation action plan aimed at reducing their impact on the climate..**

The resulting action plan focuses on:

- Designing E+ (positive energy) and C- (low-carbon) buildings.
- Installation of photovoltaic panels.
- The widespread use of LEDs in offices and common areas of industrial acceleration zones and offshoring parks.
- Creation of aeration ducts in reception buildings.
- Deployment of a video-conferencing tool.
- Paper recycling.

## LOW-CARBON BUILDINGS

MEDZ subsidiary Ewane Assets has launched a new plot (O) within Casanearshore ParK. This project comprises 4 buildings featuring an entirely new design in Morocco, in line with an ambitious environmental approach. These are positive-energy, low-carbon buildings, whose design is based on several parameters, including bioclimatic architecture based on the use of available natural resources, such as the sunrays, the use of bio-sourced materials, and other features.

To this end, a new and clean building material has been produced from earthworks cuttings. This is a raw earth brick, which promotes the circular economy in the building industry and meets the imperatives of sustainable development.

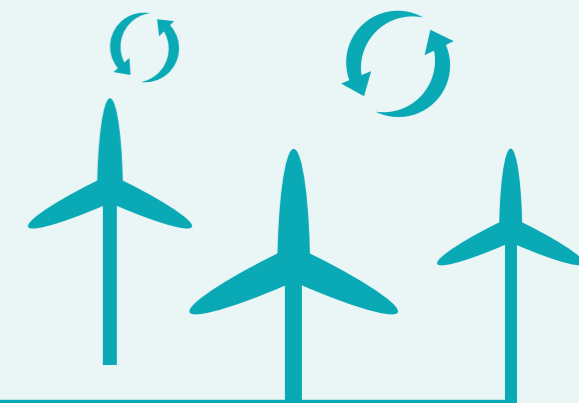
Thanks to these actions, the buildings on plot O at Casanearshore have been awarded a triple certification (HQE, BBCA, Ready to Osmoz).

## TRANSITION TO DECARBONIZED INDUSTRIAL ZONES

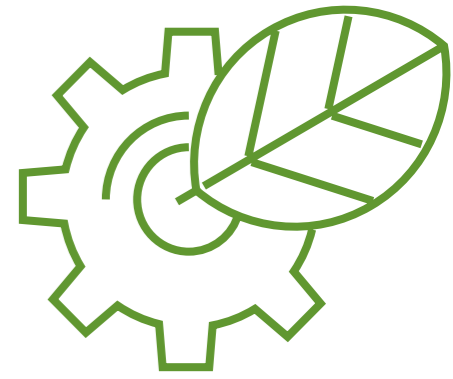
Decarbonization represents a major challenge for the future development of MEDZ's industrial zones.

To enhance the competitiveness and attractiveness of its industrial zones, MEDZ is committed to accelerating the transition to low-carbon industrial zones. To this end, MEDZ is launching an innovative project to establish a benchmark for a low-carbon industrial zone, which:

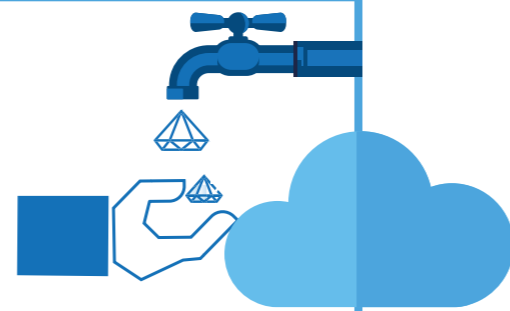
- Sets decarbonization objectives;
- Defines the levers to be activated to reinforce MEDZ's efforts to decarbonize industrial zones.



# OUR ACHIEVEMENTS IN THE FIELD OF WASTEWATER TREATMENT



## CONSTRUCTION OF WASTEWATER TREATMENT PLANTS (WWTPs)



In keeping with the sustainable development principles, MEDZ equips its projects with wastewater treatment plants (WWTPs), adapted to the types of industries installed, with the aim of domestic-quality water into the networks with the less impact on the environment.

These plants are either owned by the parks themselves, or shared with the various local players in the regions where the parks are located.

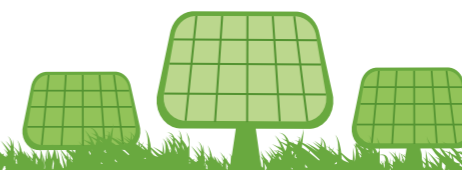
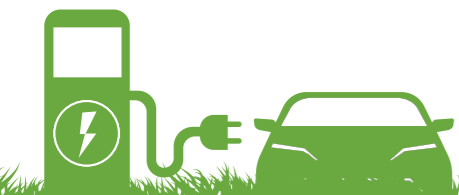


## MEDZ HAZARDOUS WASTE TREATMENT

In compliance with current environmental regulations, MEDZ has carried out a collection and treatment operation for hazardous waste generated by head office activities (electrical and electronic equipment, used neon tubes, etc.).

This operation was carried out by a specialized treatment facility authorized by the authorities.

The goal is to encourage the treatment and recycling of this hazardous waste in order to protect health, environment, and natural resources.



# OUR ACHIEVEMENTS IN THE ENERGY SECTOR

## SOLAR FARM AT ATLANTIC FREE ZONE

MEDZ has built a solar farm in the Atlantic Free Zone industrial park, with a capacity of 1.9992 MWp.

The farm is based on 7,140 poly-crystalline photovoltaic panels, covering an area of almost 5 hectares.



## SETTING UP A KNOWLEDGE CAMPUS TO PROMOTE THE DEVELOPMENT OF TRAINING IN THE FIELD OF RENEWABLE ENERGIES



Located in the Oujda Technopole park, this campus is designed to host training operators in the fields of sustainable development, tourism, offshoring and Research & Development.

The campus is home to the IFMERE (Renewable Energy and Energy Efficiency Training Institute), which offers training in wind power, solar thermal and photovoltaic energy, energy efficiency and biomass.

Through its program, the Knowledge Campus ensures that the industry has a real foothold in the world of training and innovation, including in the field of renewable energies, through this institute.

## IMPLEMENTATION OF AN ENERGY MANAGEMENT SYSTEM AT MEDZ HEADQUARTERS



To meet its energy challenges, MEDZ, in collaboration with EXPROM, have implemented an Energy Management System (EMS).

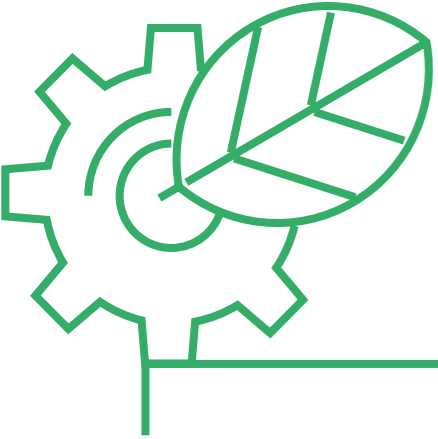
An energy-saving plan has been deployed, considerably reducing the carbon footprint of MEDZ's office activities.

Several actions have been undertaken by MEDZ, including reducing the subscribed power, the automation of the switching off of all loads, installing LEDs, and installing a clock for automatic control of the heat pump.





# OUR COMMITMENTS TO OUR STAKEHOLDERS



## PRODUCTION OF A «GREEN GESTURES» BOOKLET

- Dedicated to MidParc's customers, this booklet, which lists the park's sustainable development challenges and goals, was presented to them during a dedicated day.
- The booklet is designed to help the industrial customers extend the sustainable development approach initiated at Midparc, through a set of environmental recommendations and prescriptions to be rolled out.
- The booklet is structured around 12 themes, grouped under 3 main headings: territorial integration, social life and economic dynamics, as well as environmental and health quality.

## RAISING EMPLOYEE AWARENESS

In order to raise employee awareness of sustainable development issues and popularize the concepts, MEDZ has initiated several communication actions:

- Realization of posters at headquarters level.
- Organization of a webinar on CSR led by an expert.
- Regular broadcast of an environmental flash "The Green Minute".





CONTACT

Showroom commercial MEDZ - Rabat  
Phone : +212 537 57 66 78 - Fax: +212 537 71 64 17  
E-mail : [showroom@medz.ma](mailto:showroom@medz.ma)  
[www.medz.ma](http://www.medz.ma)